

Celebrating 20 Years of
Developing Character,
Enriching Minds

2024

IMAGINE SCHOOLS
ANNUAL REPORT

Our Mission

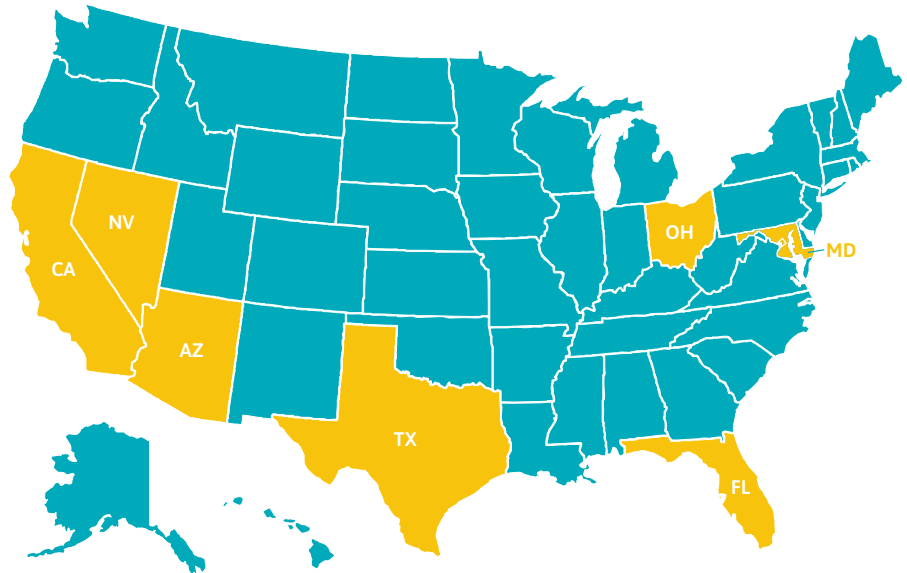
As a national family of non-profit public charter school campuses, Imagine Schools partners with parents and guardians in the education of their children by providing high quality schools that prepare students for lives of leadership, accomplishment, and exemplary character.

Our Approach

Imagine Schools emphasizes excellence in academics and character, empowering learners to become leaders. Students are equipped to track their own academic progress, using data to set personal learning goals and celebrate achievement. In learning environments rich with rigor and relevancy, students graduate well prepared for high school, college, career, and life.

Our Reach

- Over 27,000 K–12 students
- 49 charter school campuses
- 7 states



Learn More

Visit our website to explore our academic resources and discover how we develop the character and enrich the minds of students throughout the United States.

Visit us at imagineschools.org.

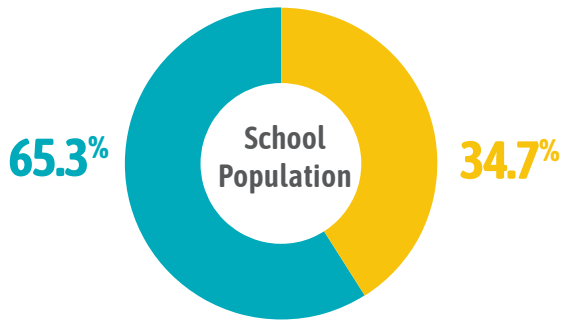
Follow us on:

 [/ImagineCharters](https://www.facebook.com/ImagineCharters)

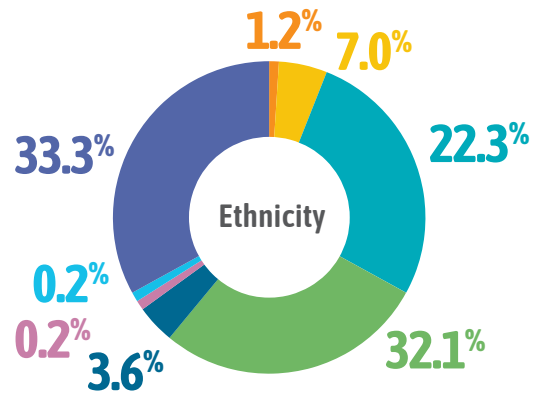
 [@ImagineCharters](https://twitter.com/ImagineCharters)



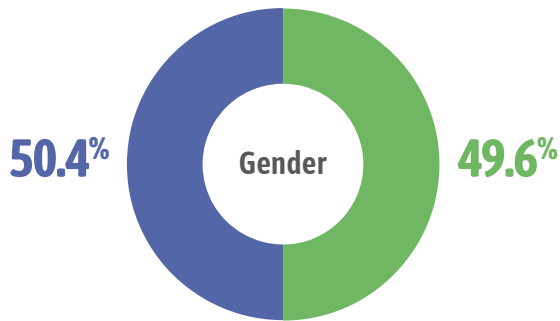
Our Students



URBAN • NON-URBAN



AMERICAN INDIAN/ALASKAN NATIVE
 ASIAN BLACK HISPANIC/LATINO
 MIXED OTHER PACIFIC ISLANDER WHITE



FEMALE • MALE

English Language Learners



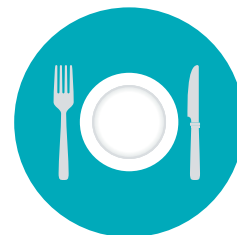
14.8%

Special Education



11.7%

Free or Reduced Lunch



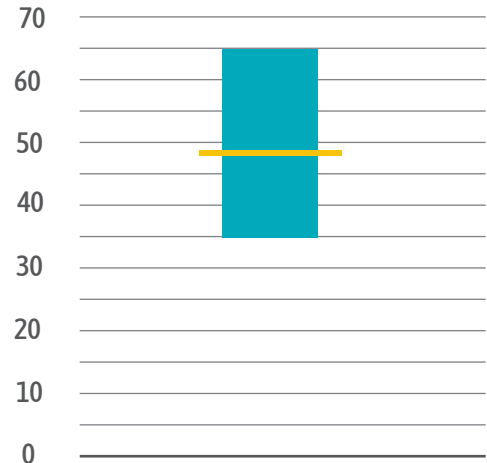
57%

Our Results

At Imagine Schools, we believe that academic growth, alongside achievement, is the most accurate measure of academic success. By analyzing growth data, we make informed decisions that foster positive learning experiences and challenge our students to soar. Our holistic educational approach, guided by our Academic Excellence Framework, embodies evidence-based and effective instructional practices. Imagine educators empower each student to make significant academic progress that is both measured and celebrated, all within a collaborative culture of high expectations.



**Median Student Growth Percentile
Imagine Schools (K-12)
Median to Typical Growth**
(National Median is 50)



TYPICAL GROWTH 35-65
IMAGINE SCHOOLS (K-12) 47

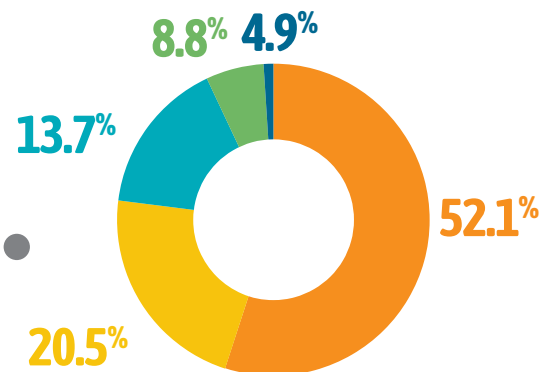
A Student Growth Percentile of 47 indicates that a student has grown better than 47% of the students who were in the same grade level and had the same scale score at the beginning of the year.

Our Budget

As stewards of public educational funding, Imagine's schools currently operate within a \$371 million total annual budget, ensuring all funds go toward the resources students need for a high-quality education.

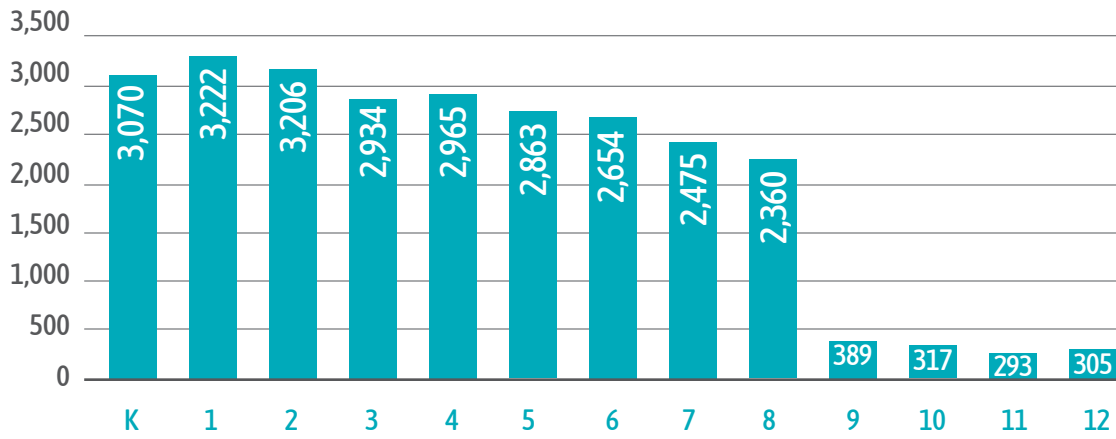
TEACHERS AND STAFF • SCHOOL OPERATING COSTS
RENT AND FACILITY COSTS • NATIONAL NETWORK SUPPORT
INTEREST AND DEPRECIATION

**Fiscal Year 2024 Imagine Schools &
Imagine Schools Non-Profit
Combined Total School Expenditures**

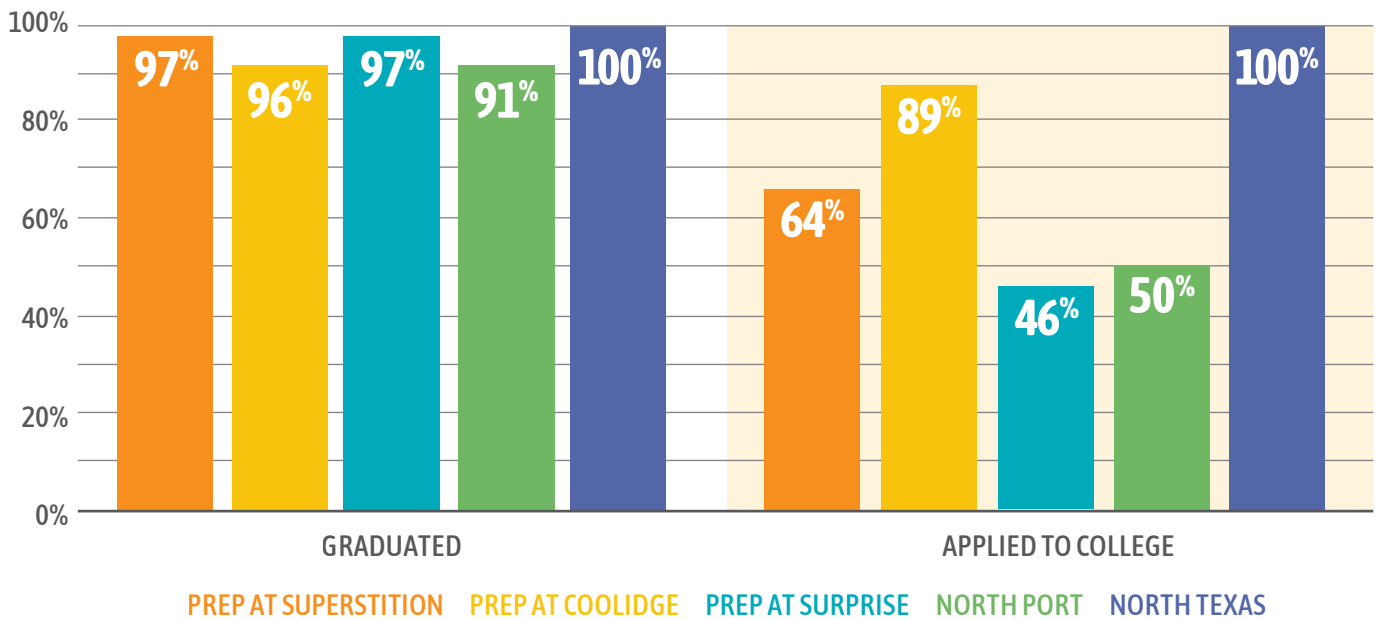


Our Schools

Imagine Schools Student Population (By Grade Level)



High School Seniors Graduation Rate and College Application Rate



Developing Character, Enriching Minds

Imagine Schools tagline “Developing Character, Enriching Minds” communicates our commitment to a holistic educational philosophy that integrates character-building opportunities into all aspects of school life, including the academic curriculum. Our approach to character development is comprehensive, and centered around two main priorities:

- **Cultivating a caring school community based on high academic and behavior expectations that foster positive relationships among all stakeholders.**
- **Promoting and integrating the teaching and learning of moral, performance, and civic core character values, as well as the social and emotional skills required for responsible decision making, emotional wellbeing, and developing positive relationships with others.**

Our integration of character development and academics has been recognized throughout the years by Character.org, a leading organization advocating for character nationally and globally. Imagine Schools was certified twice as a “District of Character” in 2020 and 2013, and 16 of our schools are currently certified as “State Schools of Character.” Since 2020, we have been recognized a total of **409 Promising Practices** at the school and district level, including 23 during 2024.





FOSTERING CHARACTER & COMMUNITY— IMAGINE INTERNATIONAL ACADEMY OF NORTH TEXAS

The following spotlights one of our two International Baccalaureate (IB) schools—Imagine International Academy of North Texas (IIANT). Located in McKinney, Texas, IIANT is among the few schools in the United States to offer all three IB programs within a single setting—at no cost to families.

True to the Imagine Schools tradition, character development is seamlessly woven into daily life, shaping students into respectful, responsible, and principled individuals. With over 1,400 students in grades K-12, IIANT's diverse and dynamic learning environment brings together a range of teaching styles through its blended IB curriculum. To ensure a cohesive and supportive school culture despite its size and instructional variety, the school community collaborated to develop shared space agreements—a unified set of behavioral expectations that promote academic excellence, social success, and a culture of respect from Kindergarten through 12th grade.

This collaborative process led to the creation of R.O.A.R.—Respect Others, Accept Responsibility—a guiding principle that defines IIANT's culture. As Imagine Dragons, students “ROAR” to uphold these values throughout the school day. A school-wide call-and-response routine reinforces the shared commitment:

Teacher: “Hey Dragons!”

Students: “Hey what?”

Teacher: “Get your Dragon on!”

Students: “ROAR!”

Teachers model what it means to R.O.A.R. in different settings—from the classroom to the playground, the hallways to field trips—ensuring that students internalize these values in every aspect of their school experience.

R.O.A.R. in Action: The Dragon Diner

A standout example of character in action is The Dragon Diner, the school's structured lunch environment designed to foster respect, responsibility, and self-management. Students follow a three-step musical cue system to transition seamlessly through their mealtime routine:

Musical Cue #1 – “Time to eat”

Students enjoy their meals while practicing good manners and engaging in quiet conversation.

Musical Cue #2 – “Time to clean”

They take responsibility for tidying their space, disposing of trash, and wiping down tables.

Musical Cue #3 – Time to line up and exit”

Using sign language, students indicate readiness for dismissal and transition in an orderly manner.

This intentional approach not only reinforces independence and accountability but also creates a respectful and community-oriented atmosphere. The impact extends beyond the school—parents report that students are bringing these habits home, demonstrating better table manners and a greater sense of responsibility during family meals.

At IIANT, character education isn't just taught—it's lived, strengthening students' habits of mind and heart while preparing them to be principled leaders in their communities.



Imagine Schools Earns National Recognition



Character.org has recognized Imagine Schools' emphasis on character education with a total of **409 Promising Practices** awards to date, in addition to previous State and National Schools of Character awards, including recognition as a National District of

Character in 2020 and 2013.

These awards recognize winning practices including unique anti-bullying programs, creative ways to integrate character and academic subjects, effective strategies for developing student leadership, and activities that build community—within our schools and beyond.

2023-2024 State Schools of Character:

- Imagine Palmer Ranch (FL)
- Imagine Rosefield (AZ)

2023-2024 State & National Schools of Character:

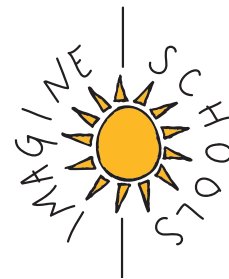
- Imagine Madison Avenue (OH)
- Imagine North Port (FL)
- Imagine South Vero (FL)
- Imagine Town Center (FL)
- Imagine West Melbourne (FL)

Imagine Schools National Teacher of the Year

Imagine Schools is thrilled to recognize **Samantha Karras**, a Third Grade Math and Science teacher at **Imagine South Lake** in Florida, as our 2024 National Teacher of the Year. With nine years of dedicated service at Imagine South



Lake, Samantha has demonstrated exceptional leadership and innovation in various roles, including Lead Planner and Peer Coach. Her commitment to student success is unwavering, and her inclusive approach ensures that every child's unique needs are met. By creating a warm, supportive, and empowering environment, Samantha fosters both academic growth and personal development. We are proud to celebrate her outstanding contributions to our students and the Imagine Schools community.



Imagine Schools

1900 Gallows Road, Suite 250

Vienna, VA 22182

Phone: 703-527-2600

Fax: 703-527-0038

contactus@imageschools.org

imageschools.org